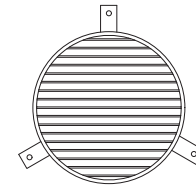
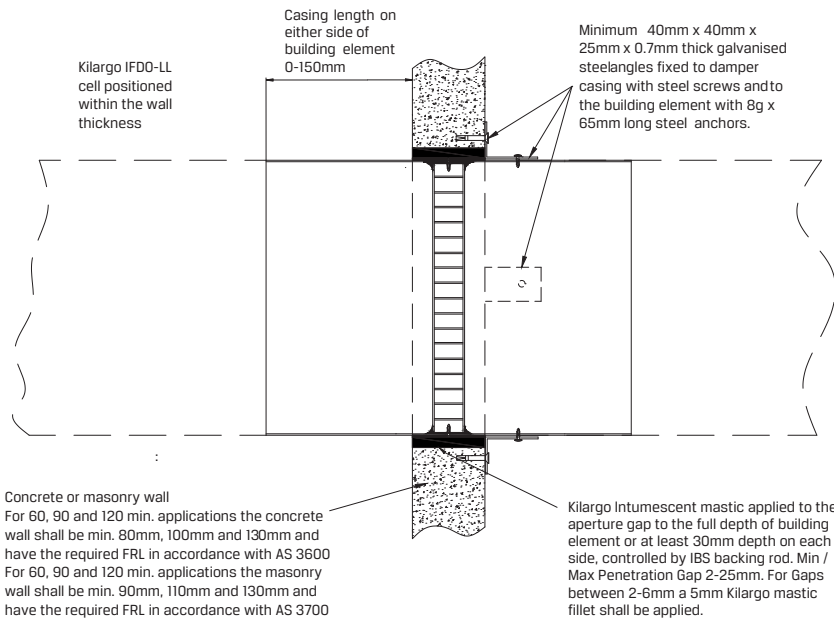
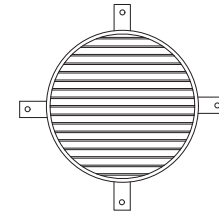


Installation Instructions:

Ducted



3 Off Angle brackets for sizes up to 200mm dia



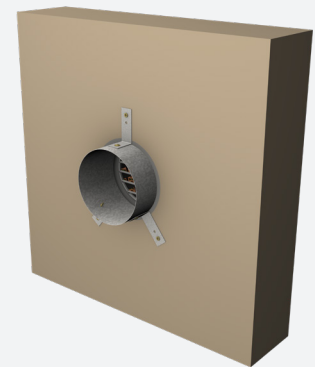
4 Off Angle brackets for sizes 250mm dia and over

Alternative Fixing Method

- Step 1** Position damper centrally in penetration aperture as per system drawing with IBS Backing Rod and packers.
- Step 2** Fasten mounting brackets to damper with steel self-drilling screws or steel pop rivets and to the building element with appropriate mechanical fixings as per system drawing.
- Step 3** Apply Kilargo Intumescent Mastic (supplied separately) to the gaps between the damper & building element. Ensure fill depth corresponds with those detailed in the system drawing.
- Step 4** Ensure product and certification labels are in a prominent position for easy identification during subsequent maintenance inspections.
- Step 5** Connect ductwork to the damper casing with AS 1682.2 compliant breakaway joint.

System Notes

- Grilles, louvres, IBS backing rod & fixings are to be supplied by others.
- Kilargo Intumescent Fire Dampers shall be installed in accordance with this detail, including the use of Kilargo Intumescent Mastic and in accordance with the requirements of AS1682.2
- Ensure convenient access is provided for visual inspection and cleaning as necessary
- 2mm Minimum gap allowable between damper and aperture. For gaps between 2-6mm, a fillet of Kilargo Intumescent Mastic shall be applied



Building element: Masonry / Concrete

Application: Ducted

Maximum size: 350 DIA

FRL -/120/120

Test reference No. FCO 3344

System No. WM5