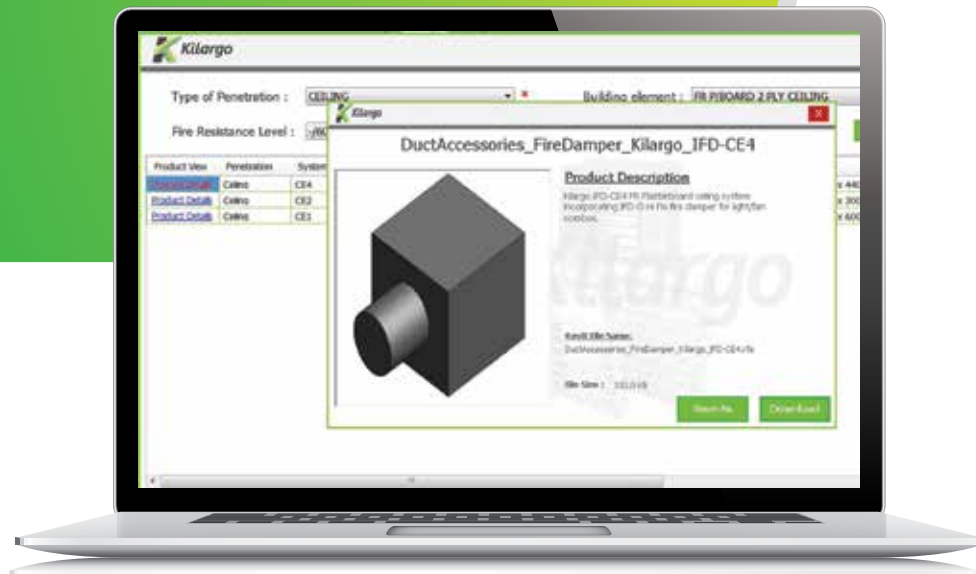


Kilargo Revit MEP API Interface

Version 2.0.6
May 2015



Frequently Asked Questions

Q. What are some features and benefits of the Kilargo Revit Selection Tool and Revit Content?

A. The Kilargo Revit content automatically sizes and orients to suit the Duct size and orientation. The content is also compliant with the industry standard BIM-MEP^{AUS}. The Kilargo Revit Selection tool enables you to select criteria such as type of penetration, fire resistance level and building element, and then shows you the available Kilargo dampers and compliant systems that suit those criteria. On selecting one of those products, you can save the corresponding Revit file to your computer instantly, or immediately place in your project.

Q. Where do I get the Kilargo Revit Selection Tool and what does it cost?

A. The Kilargo Revit Selection Tool is readily available at no charge from www.kilargo.com.au/revit

Alternatively it is also available for subscribers to BIM-MEP^{AUS} at: www.thinkbimmepaus.com.au/manufacturers/kilargo/

Note: There is an annual subscription fee to access all the content on this site.

Note: Some internet browsers such as Google Chrome may have security settings that prevent you from downloading this file. If this occurs, either change the security settings in your browser or use another internet browser.

Q. What do I do once I have downloaded the Kilargo Revit Selection Tool?

A. Once you have downloaded the small application file, you will need to locate it on your computer (typically placed in the 'Downloads' folder by default), double click the file, then select 'Run'. This will install the Kilargo Revit Selection tool on your computer. Now when you open your Revit MEP program you will see the Kilargo button in your top menu.

Q. What version of Revit is the Kilargo Revit Selection Tool available for?

A. The Revit API has been designed specifically for Revit MEP 2014 and Revit MEP 2015, supporting both 32-bit and 64-bit environments.

Q. What system requirements are there to run the Kilargo Revit Selection Tool?

A PC capable of running Revit MEP 2014 or 2015, with Revit MEP 2014 or 2015 installed.

Q. Aside from Revit, is there any other software required to run the tool?

A. The .NET Framework is required, which is installed as part of the Revit MEP installation.

Q. Does the tool work on all operating systems?

A: The Revit API Interface is designed specifically for a Windows 7 operating environment, but may also be used on a Windows 8 environment.

Q. How do I get revised versions of the Kilargo Revit content?

A: The Kilargo Revit Selection Tool loads the selected content from the website server. This way you know that the content you are loading using this tool is the latest and most up to date version.

Q. How do I request support for this tool?

A: For questions related to Kilargo products, please contact Kilargo on **+61 7 3635 5000**.

For questions relating to the Kilargo Revit content or Selection tool contact A2K Technologies at **BMA@a2ktechnologies.com.au**